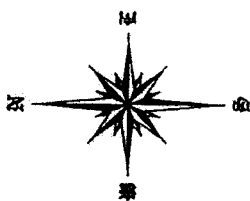






**LEGEND**

- IRS 5/8" IRON ROD SET WITH A CAP STAMPED "TRANS TEXAS SURVEYING"
- ORF CAPPED IRON ROD FOUND CONTROLLING MONUMENT
- C.M. CONTROLLING MONUMENT



**TYPICAL LOLL LAYOUT WITH ASTERISK (L)**



**TYPICAL LOLL LAYOUT**

**PROPERTY DESCRIPTION**

BEING 9.565 ACRES OF LAND LOCATED IN THE M.C. RIDLEY SURVEY, ABSTRACT NO. 736, JOHNSON COUNTY, TEXAS, AND BEING A PORTION OF CALLED 873,182 ACRES TRACT OF LAND AS DESCRIBED IN A DEED RECORDED IN VOLUME 2703, PAGE 554, OFFICIAL PUBLIC RECORDS, JOHNSON COUNTY, TEXAS (D.P.A.C.T.), AND BEING MORE PARTICULARLY DESCRIBED AS FOLLOWS:

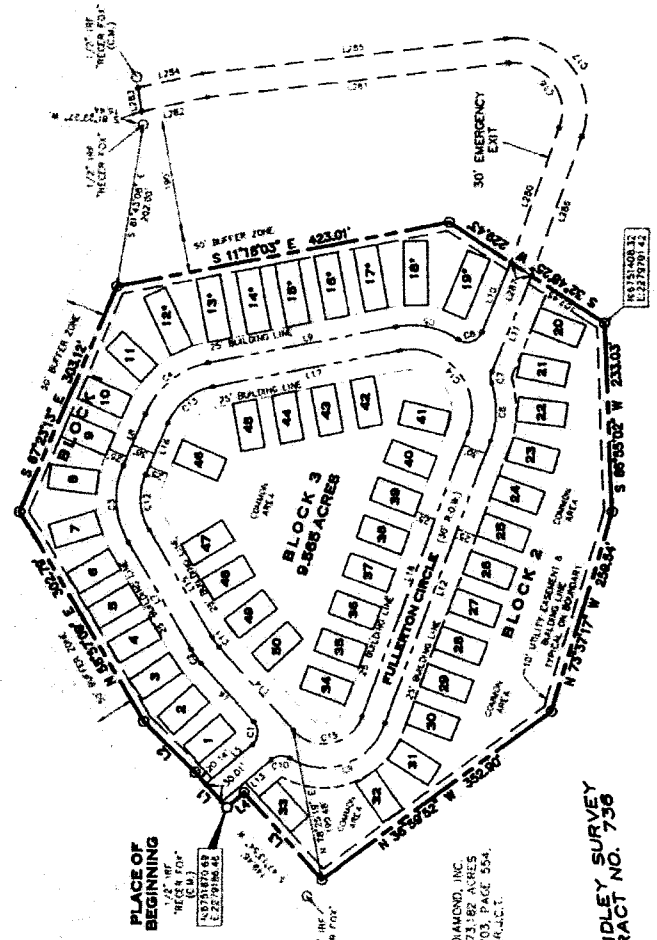
BEGINNING AT A 1/2" IRON ROD FOUND WITH A CAP STAMPED "RECR FOR" AT THE SOUTHWEST CORNER OF LOT 20, BLOCK 48, THE RETREAT, PHASE 5, ACCORDING TO THE PLAT RECORDED IN VOLUME 9, PAGE 828, PLAT 5, JOHNSON COUNTY, TEXAS (D.P.A.C.T.), BEING IN THE SOUTHWEST LINE OF FULLERTON DRIVE (A 60' RIGHT-OF-WAY);

THENCE N 47°13'34" E CROSSING SAID FULLERTON DRIVE, A DISTANCE OF 60.00 FEET TO THE SOUTHWEST CORNER OF SAID FULLERTON DRIVE;

THENCE CROSSING SAID 873,182 ACRE TRACT THE FOLLOWING BEARINGS AND DISTANCES:

- N 44°11'00" E, A DISTANCE OF 90.53 FEET TO A 5/8" IRON ROD SET WITH A CAP STAMPED "TRANS TEXAS SURVEYING";
- N 56°37'08" E, A DISTANCE OF 302.78 FEET TO A 5/8" IRON ROD SET WITH A CAP STAMPED "TRANS TEXAS SURVEYING";
- S 87°23'17" E, A DISTANCE OF 304.12 FEET TO A 5/8" IRON ROD SET WITH A CAP STAMPED "TRANS TEXAS SURVEYING" FROM WHICH A 1/2" IRON ROD FOUND WITH A CAP STAMPED "RECR FOR", BEARS S 81°43'08" E, A DISTANCE OF 202.00 FEET;
- S 11°16'03" E, A DISTANCE OF 423.01 FEET TO A 5/8" IRON ROD SET WITH A CAP STAMPED "TRANS TEXAS SURVEYING";
- S 32°48'25" W, A DISTANCE OF 228.43 FEET TO A 5/8" IRON ROD SET WITH A CAP STAMPED "TRANS TEXAS SURVEYING";
- S 86°52'02" W, A DISTANCE OF 233.03 FEET TO A 5/8" IRON ROD SET WITH A CAP STAMPED "TRANS TEXAS SURVEYING";
- N 73°37'17" W, A DISTANCE OF 256.54 FEET TO A 5/8" IRON ROD SET WITH A CAP STAMPED "TRANS TEXAS SURVEYING";
- N 38°56'53" W, A DISTANCE OF 352.90 FEET TO A 5/8" IRON ROD SET WITH A CAP STAMPED "TRANS TEXAS SURVEYING";
- N 47°32'00" E, A DISTANCE OF 148.82 FEET TO A 5/8" IRON ROD SET WITH A CAP STAMPED "TRANS TEXAS SURVEYING";
- N 42°55'41" W, A DISTANCE OF 382.88 FEET TO THE PLACE OF BEGINNING AND CONTAINING 9.565 ACRES OF LAND.

**THE RETREAT PHASE 5, VOLUME 9, PAGE 828, PLAT 5, D.P.A.C.T.**



DOUBLET DIAMOND, INC.  
CALLED 873,182 ACRES  
VOLUME 2703, PAGE 554,  
D.P.A.C.T.

**M.C. RIDLEY SURVEY  
ABSTRACT NO. 736**

**FINAL PLAT  
SHOWING**

**THE RETREAT, PHASE 11  
GARDEN HOME ADDITION,  
AN ADDITION TO  
JOHNSON COUNTY, TEXAS,  
BEING 9.565 ACRES OF LAND LOCATED IN THE M.C. RIDLEY  
SURVEY, ABSTRACT NO. 736, JOHNSON COUNTY, TEXAS.**

"VOID UNLESS RECORDED IN THE  
PLAT RECORDS OF JOHNSON  
COUNTY, TEXAS, ON OR BEFORE  
THE DATE OF APPROVAL BY THE  
COUNTY."

PLAT RECORDED IN \_\_\_\_\_ DATE \_\_\_\_\_

VOLUME \_\_\_\_\_ PAGE \_\_\_\_\_

COUNTY CLERK, JOHNSON COUNTY, TEXAS

DEPUTY \_\_\_\_\_



*Robert D. Young*

DOUBLET DIAMOND, INC.  
5425 S. HUNTER ROAD  
DALLAS, TEXAS 75234  
PHONE: (214) 788-9881

**TRANS TEXAS SURVEYING & MAPPING**

181 L. MILITARY BLVD. HOUSTON, TEXAS 77058  
OFFICE: 877-555-8778  
FAX: 877-555-8775

Scale: 1"=100' Date: 09/11/13 DWG: 20120040-FINAL PLAT  
Drawn: LGP Checked: RLY Job: 20120040

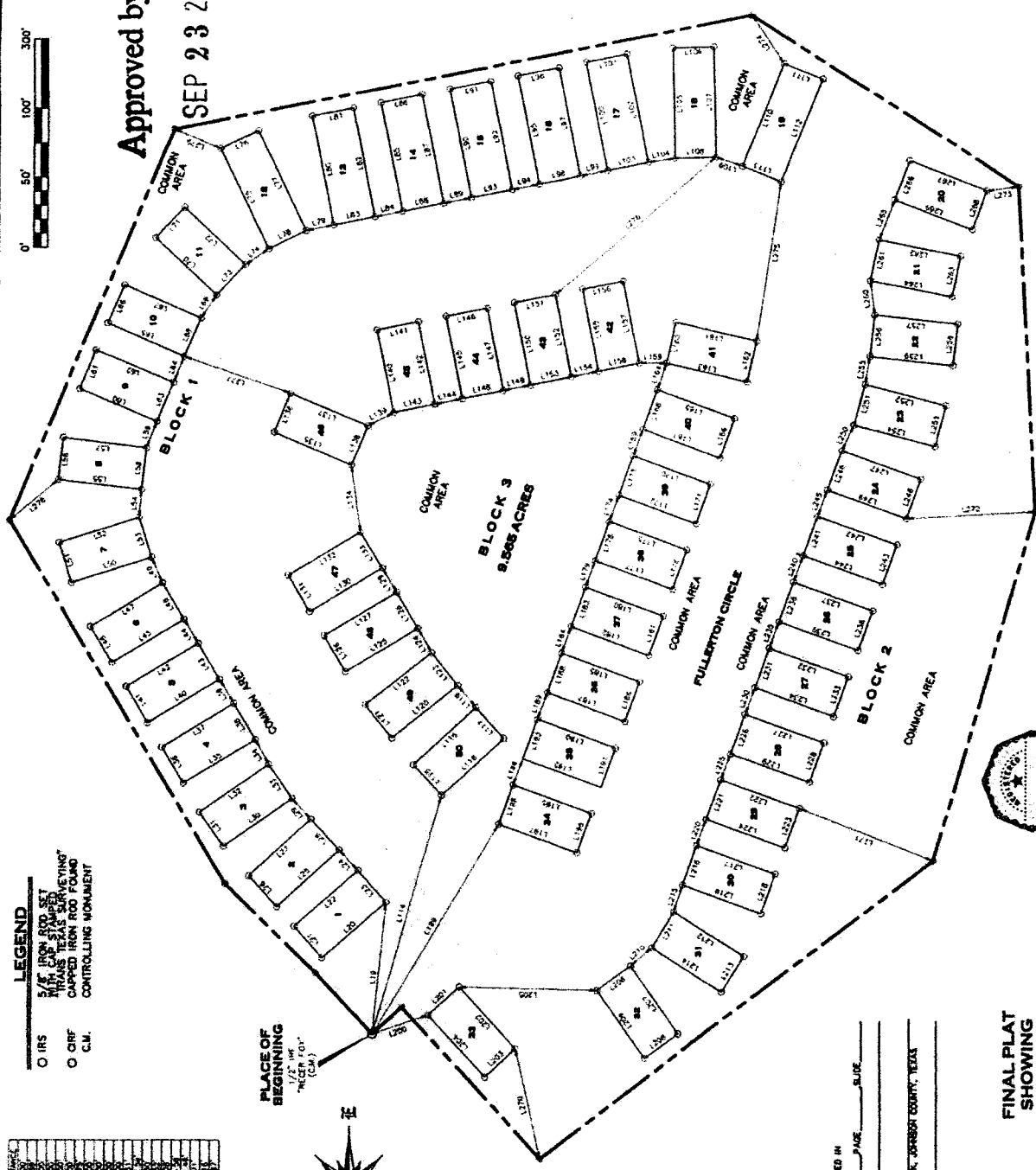
STATION	BEARING	DISTANCE
1	N 44°11'00" E	90.53
2	N 56°37'08" E	302.78
3	S 87°23'17" E	304.12
4	S 11°16'03" E	423.01
5	S 32°48'25" W	228.43
6	S 86°52'02" W	233.03
7	N 73°37'17" W	256.54
8	N 38°56'53" W	352.90
9	N 47°32'00" E	148.82
10	N 42°55'41" W	382.88

LOT NO.	ACRES	AREA
1	0.19	13,100
2	0.19	13,100
3	0.19	13,100
4	0.19	13,100
5	0.19	13,100
6	0.19	13,100
7	0.19	13,100
8	0.19	13,100
9	0.19	13,100
10	0.19	13,100
11	0.19	13,100
12	0.19	13,100
13	0.19	13,100
14	0.19	13,100
15	0.19	13,100
16	0.19	13,100
17	0.19	13,100
18	0.19	13,100
19	0.19	13,100
20	0.19	13,100
21	0.19	13,100
22	0.19	13,100
23	0.19	13,100
24	0.19	13,100
25	0.19	13,100
26	0.19	13,100
27	0.19	13,100
28	0.19	13,100
29	0.19	13,100
30	0.19	13,100
31	0.19	13,100
32	0.19	13,100
33	0.19	13,100
34	0.19	13,100
35	0.19	13,100
36	0.19	13,100
37	0.19	13,100
38	0.19	13,100
39	0.19	13,100
40	0.19	13,100
41	0.19	13,100
42	0.19	13,100
43	0.19	13,100
44	0.19	13,100
45	0.19	13,100
46	0.19	13,100
47	0.19	13,100
48	0.19	13,100
49	0.19	13,100
50	0.19	13,100
51	0.19	13,100
52	0.19	13,100
53	0.19	13,100
54	0.19	13,100
55	0.19	13,100
56	0.19	13,100
57	0.19	13,100
58	0.19	13,100
59	0.19	13,100
60	0.19	13,100
61	0.19	13,100
62	0.19	13,100
63	0.19	13,100
64	0.19	13,100
65	0.19	13,100
66	0.19	13,100
67	0.19	13,100
68	0.19	13,100
69	0.19	13,100
70	0.19	13,100
71	0.19	13,100
72	0.19	13,100
73	0.19	13,100
74	0.19	13,100
75	0.19	13,100
76	0.19	13,100
77	0.19	13,100
78	0.19	13,100
79	0.19	13,100
80	0.19	13,100
81	0.19	13,100
82	0.19	13,100
83	0.19	13,100
84	0.19	13,100
85	0.19	13,100
86	0.19	13,100
87	0.19	13,100
88	0.19	13,100
89	0.19	13,100
90	0.19	13,100
91	0.19	13,100
92	0.19	13,100
93	0.19	13,100
94	0.19	13,100
95	0.19	13,100
96	0.19	13,100
97	0.19	13,100
98	0.19	13,100
99	0.19	13,100
100	0.19	13,100

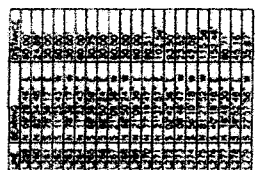
Approved by CC:  
SEP 23 2013



Approved by CC:  
SEP 23 2013



- LEGEND**
- IRS
  - 5/8" IRON ROD SET
  - 1/4" CAP IRON ROD SET
  - TRANS TEXAS SURVEYING
  - CAPPED IRON ROD FOUND
  - C.M. CONTROLLING MONUMENT



PLACE OF BEGINNING  
1/2" RADIUS  
C.M.

PLAT RECORDED IN \_\_\_\_\_  
VOLUME \_\_\_\_\_ PAGE \_\_\_\_\_ SUBD. \_\_\_\_\_  
DATE \_\_\_\_\_  
COUNTY CLERK, JOHNSON COUNTY, TEXAS  
DEPUTY \_\_\_\_\_

FINAL PLAT  
SHOWING

THE RETREAT, PHASE 11  
GARDEN HOME ADDITION,  
AN ADDITION TO  
JOHNSON COUNTY, TEXAS.  
BEING 9.565 ACRES OF LAND LOCATED IN THE M.C. RIDLEY  
SURVEY, ABSTRACT NO. 736, JOHNSON COUNTY, TEXAS.



*Robert D. Jones*

\*NO UNLESS RECORDED IN THE  
PLAT RECORDS OF JOHNSON  
COUNTY, TEXAS, THE DATE OF APPROVAL BY THE  
COUNTY.

DOUBLE DIAMOND, INC.  
5416 W. BERRY ROAD,  
DALLAS, TEXAS 75234  
PHONE: (214) 746-9801

**TRANS TEXAS SURVEYING**  
WEST WIRE OF WIRE  
NO. 1 BELLI WIRE ROAD  
CLUBBIE, TEXAS 75025  
OFFICE: 817-535-3710  
FAX: 817-535-3715  
Scale: 1"=60' Date: 09/11/13 DWG: 20120040-FINAL PLAT  
Drawn: LGP Checked: RLY Job: 20120040